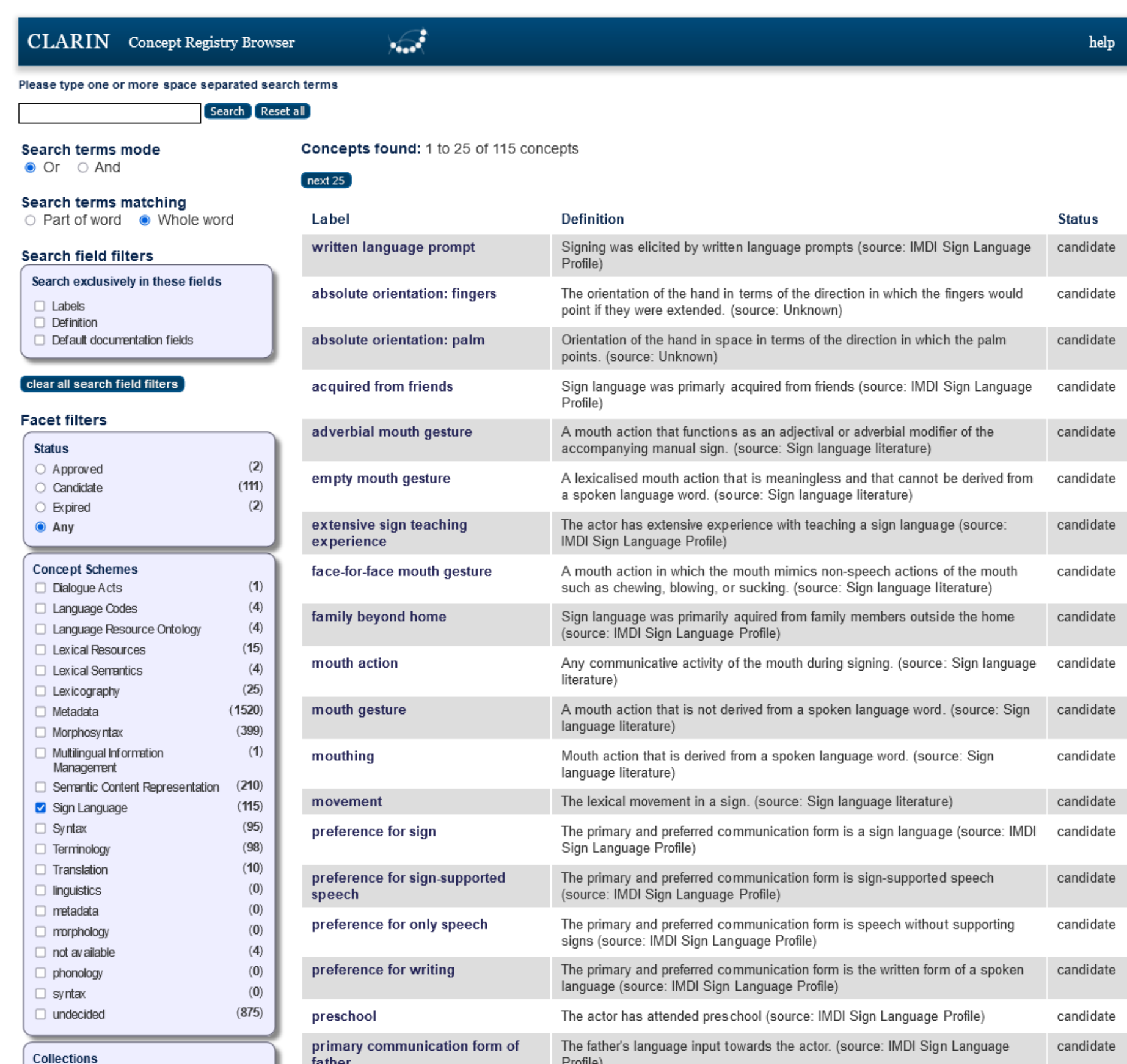


Towards a new Ontology for Sign Languages

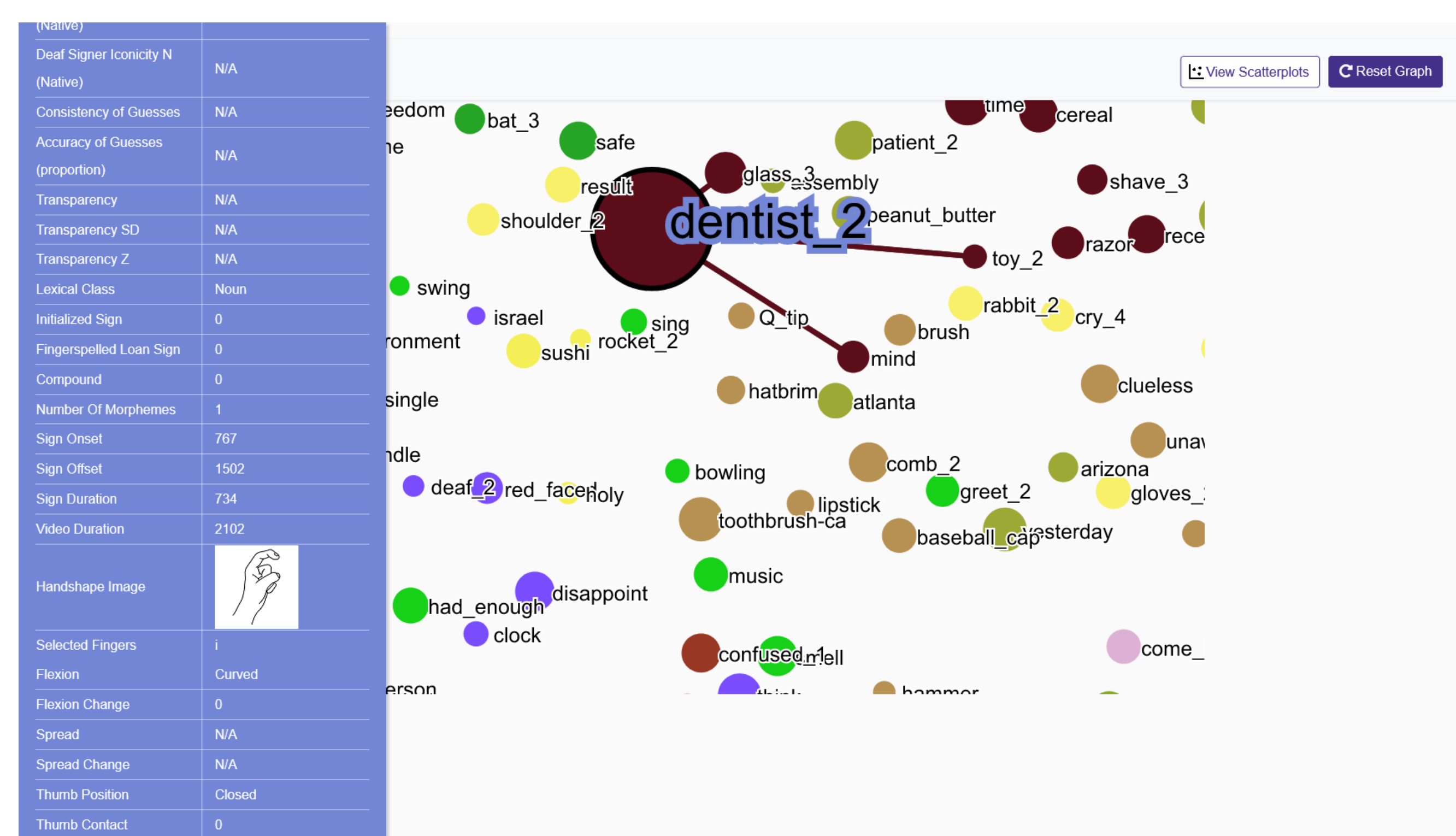
Thierry Declerck, DFKI GmbH
declerck@dfki.de



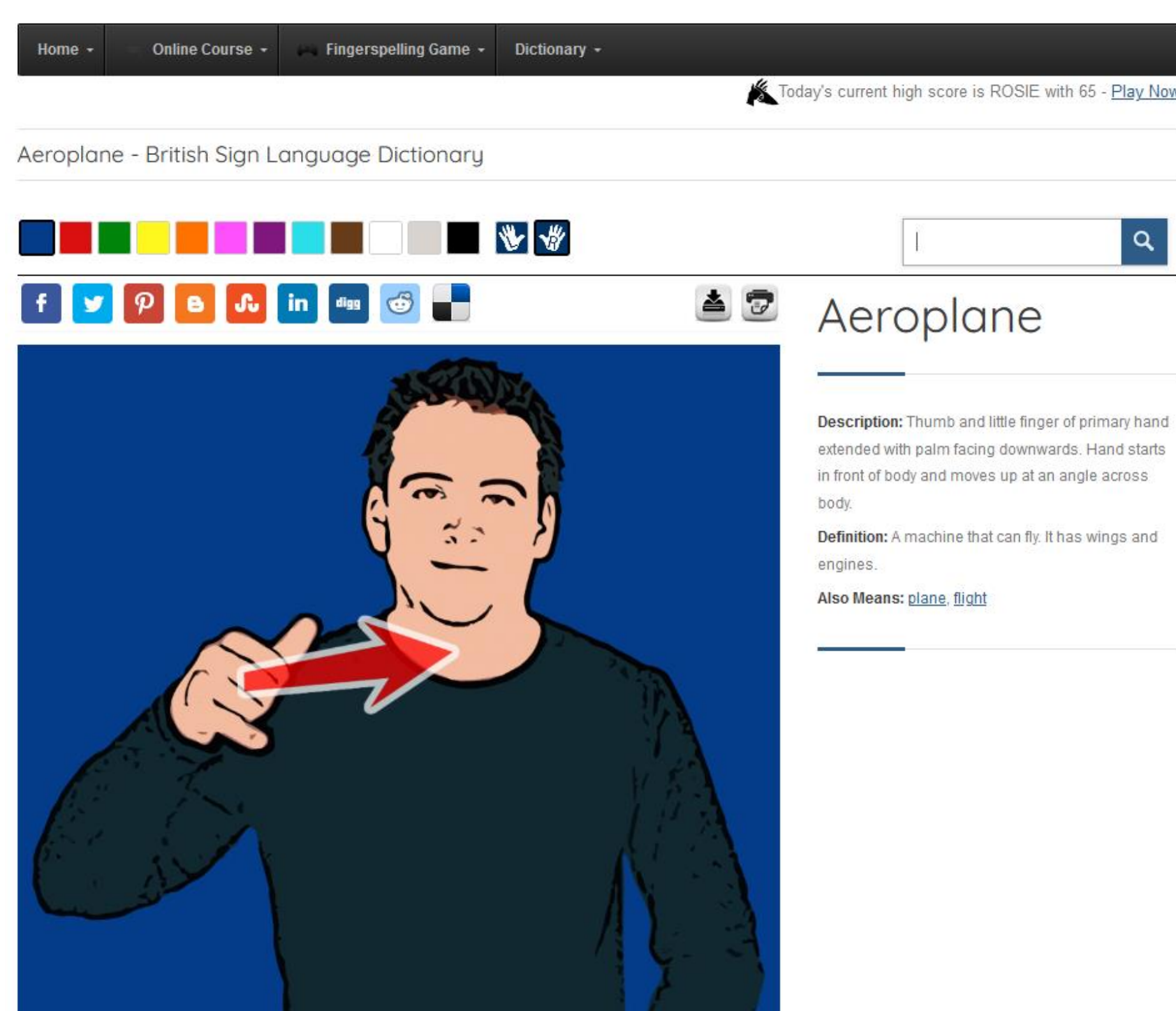
115 concepts related to Sign Language in the **CLARIN Concept Registry**



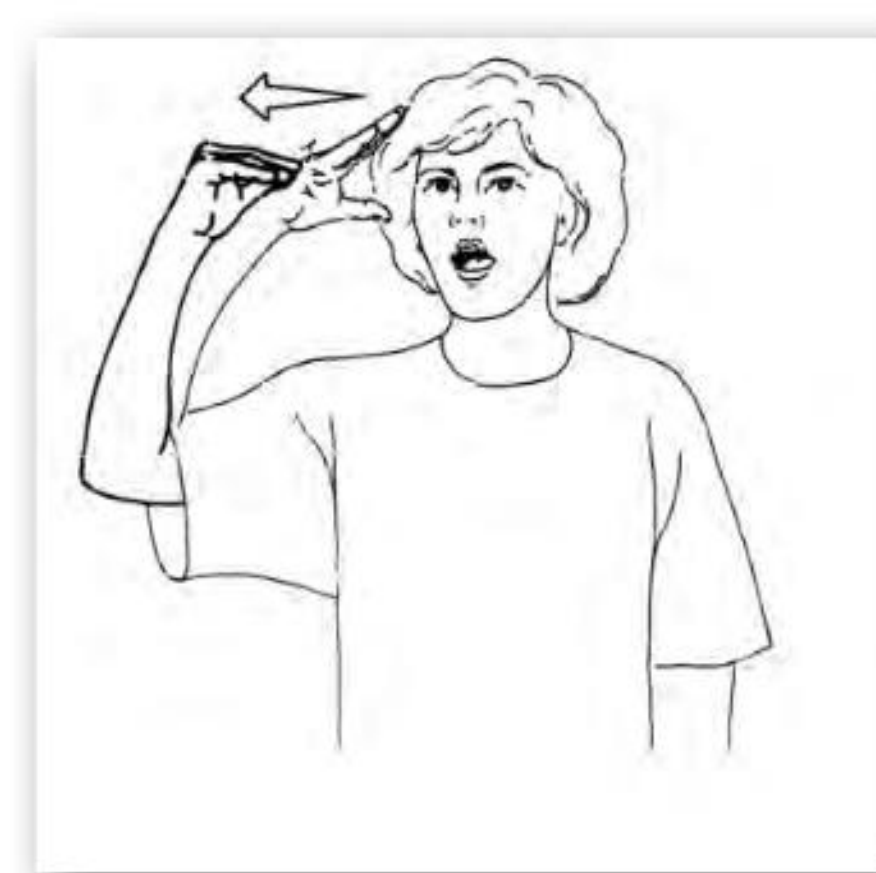
Data Categories for Sign Language in ASL: <https://asl-lex.org/visualization/>: 95 features distributed over 7 main classes: Frequency Properties, Iconicity Properties, Lexical Properties, Sign Duration, Phonology, Phonological Calculations, and Acquisition Information. Example for “dentist_2”



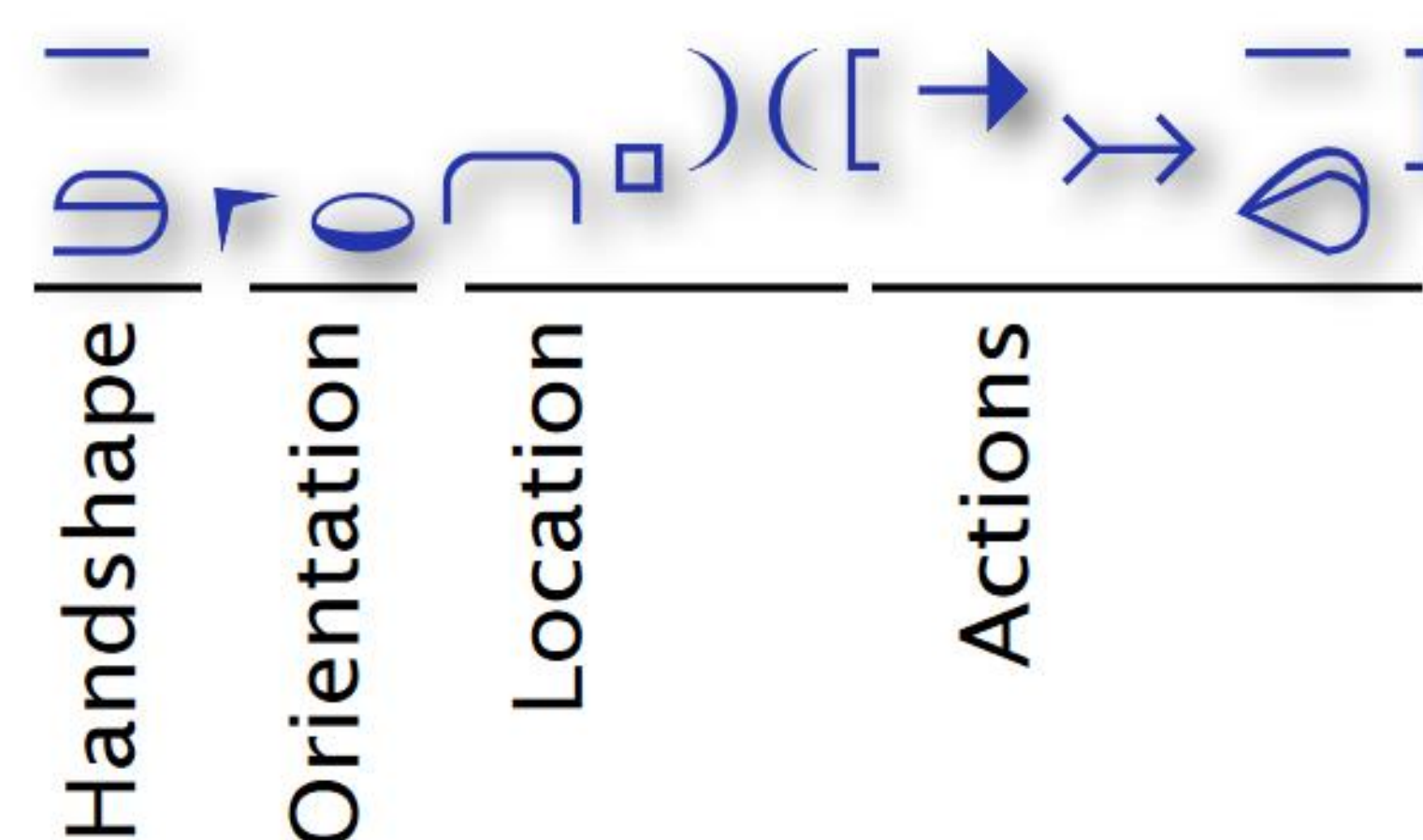
British Sign Language Dictionary, including precise descriptions for 484 signs:
<https://www.british-sign.co.uk/british-sign-language/how-to-sign/aeroplane/>



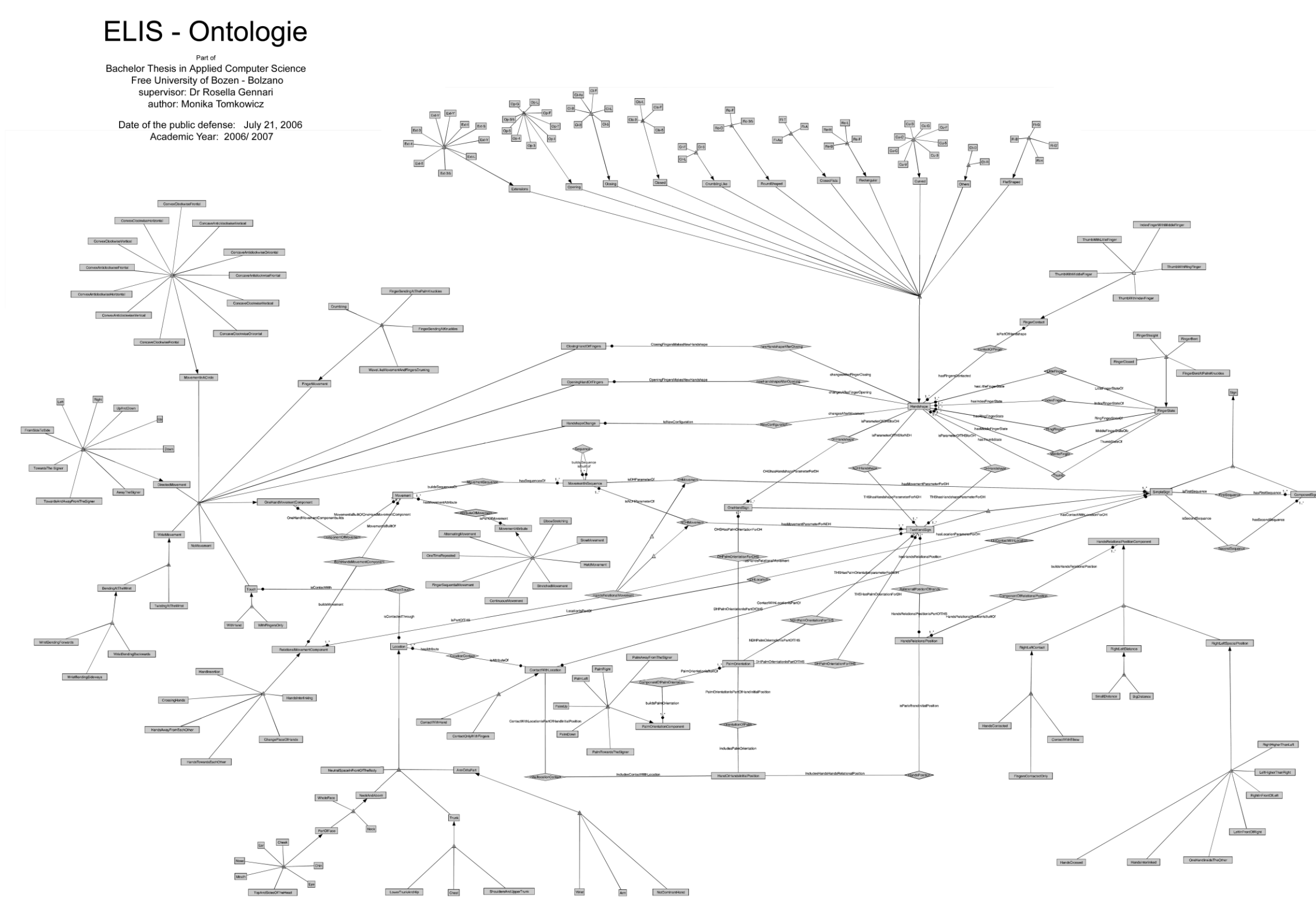
HamNoSys – Hamburg Notation System for Sign Languages, with a symbol inventory of more than 210 characters. An example of the HamNoSys Structure https://www.sign-lang.uni-hamburg.de/dgs-korpus/files/inhalt_pdf/HamNoSys_2018.pdf



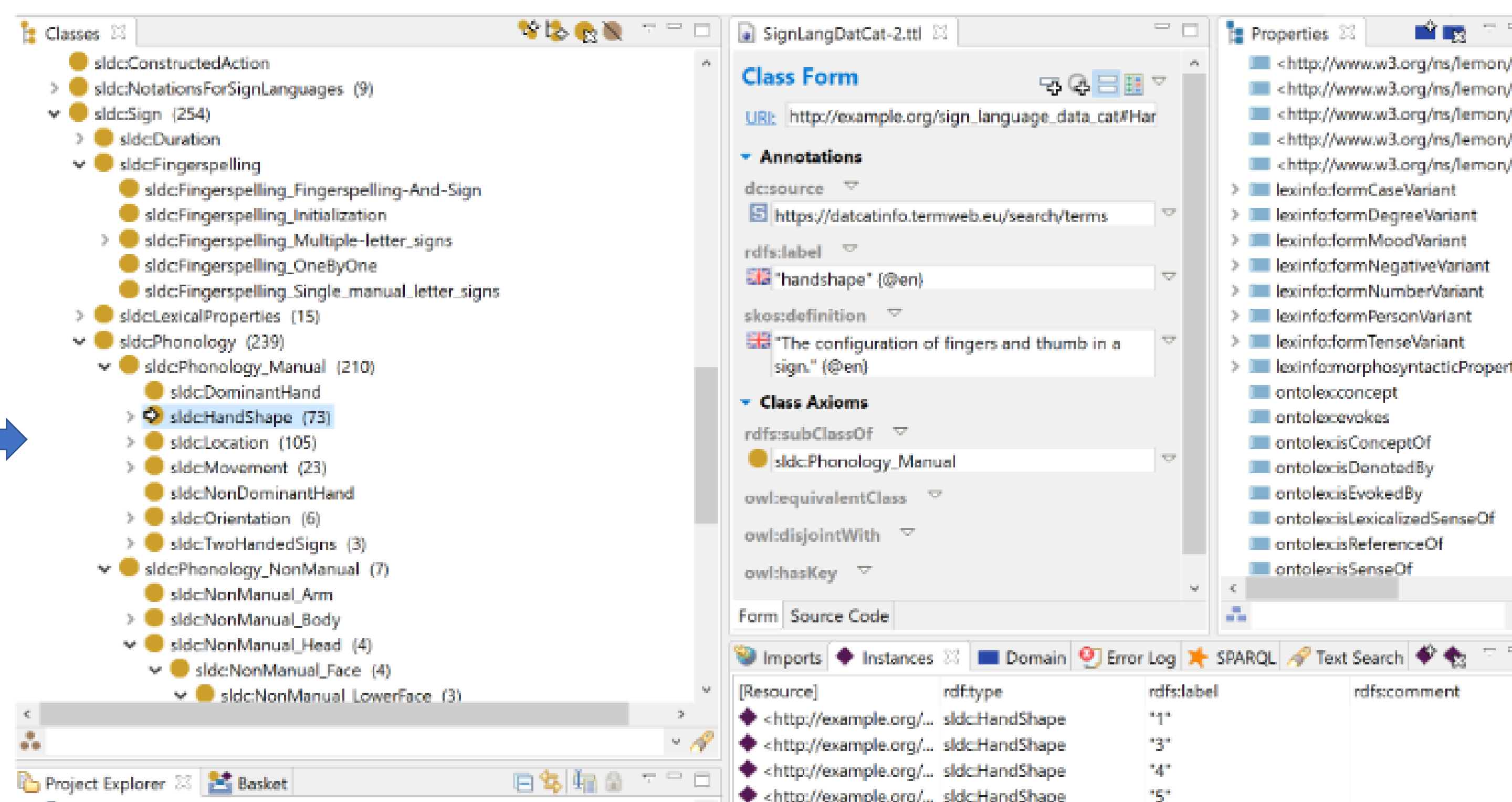
HAMBURG



An Ontology for a **Web Dictionary of Italian Sign Language**. Available only in <http://www.inf.unibz.it/~gennari/projects/elis/pub/thesis.pdf>



Harmonizing and integrating the Sign Language Data Categories, Concepts, Alphabets for Characters, etc. in one Ontologie



Poster presented at

